



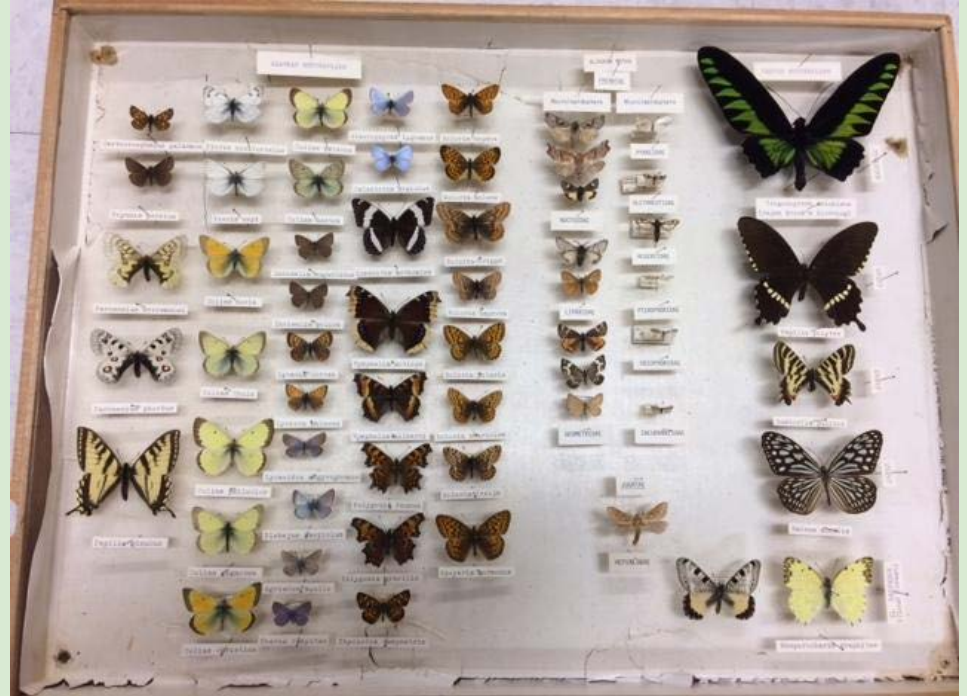
Lepidoptera Highlights from 2016 at UAM

Kathryn Daly, Derek Sikes, Jayce Williamson, Renee Nowicki

All photographs outside of UAM taken by Derek Sikes except where noted / inside UAM photos by KMD

Outline

- Curation of KWP Collection
 - Smithsonian Visit
 - LepNet / Photography
 - Wing Length Study
- NPS Bioblitz / Nat'l Moth Week
- Galena Butterfly Fest
- Denali *Lycaena phlaeas*
- Gates of the Arctic *Oeneis uhleri*









ALASKA
LEPIDOPTERA
SURVEY



LepNet & the KWP Collection

- 27 institutions across USA

Goal: 1.7 million specimens

- UAM: 2 technicians, started 1 July

13,000 specimens databased

111,800 Beringian specimens

12% processed (now 18% done!)

- All Drawers Now Photographed!





KWP:Ento:37267

Agriades optilete

[<< Return to results](#)
[get a DOI](#)

Homer

North America, United States, Alaska

7/16/1911

whole organism (pinned)

Report
first
Record

[Identification](#) [Accn](#) [Locality](#) [Agents](#) [Parts](#) [Part Locn.](#) [Attributes](#) [Other IDs](#) [Media](#) [Encumbrances](#)

Edit

Identifiers

Edit

secondary identifier: ALS Volunteer record 12

Edit

Part Name	Condition	Disposition	Qty	Label	Loan	Remarks
whole organism (pinned)	intact	being processed	1	UAM100403636		potential loaned specimen

age class: adult

Edit

Jayce Williamson, 2016-11-02

Remarks: Additional label: W. S. McAlpine collection 1972

Entered By: Matt Bowser on 2015-10-07

Last Edited By: JBWILLIAMSON on 2016-11-02

Accession

[KWP-2015.01-ALS-Ento](#)

Media

Citations

referral of *Agriades optilete* in [Philip & Ferris 2015](#)



Edit

[BerkeleyMapper](#)

Determination Type: accepted place of collection

assigned by Matt Bowser on 2015-03-23

Higher Geography: [North America](#), [United States](#), [Alaska](#) [more](#)

Specific Locality: Homer

Event Remarks: Verbatim collector: McAlpine, W.S.

Locality Remarks: Coordinates extracted from Alaska Lepidoptera Survey volunteer database. Coordinate accuracy was unknown, set to 3km.

Event Date: 1911-07-16

Verbatim Date: 7/16/1911

Verification Status: unverified

Coordinates: 59.645 / -151.55

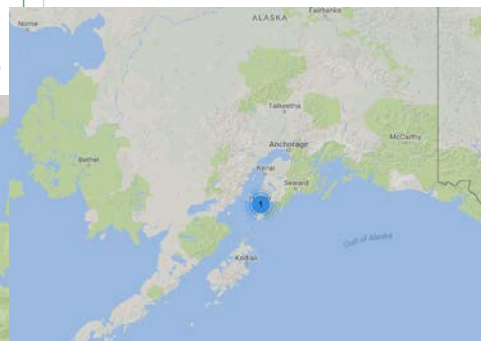
Verbatim Coordinates: 59.645/-151.55

Datum: World Geodetic System 1984

Error: 3000 m

Georeference Source: Alaska Lepidoptera Survey
volunteer database

Georeference Protocol: MaNIS georeferencing guidelines



The Universe

- University of Alaska Museum (institution)
- UAM Collections Storage Range rm 09 (room)
- C13857 (cabinet)
- KWP-C13857-23 (drawer)
- UAM100403636 (tag)









Alaska Butterfly Wing Length Study

Greenland: *High Arctic butterflies become smaller with rising temperatures (Bowden, 2015)*

2 species: *Colias hecla* & *Boloria chariclea*

Zackenbergl Station (1996-2013), 4500 individuals

Do Alaska butterflies exhibit spatial and temporal variation in wing length?

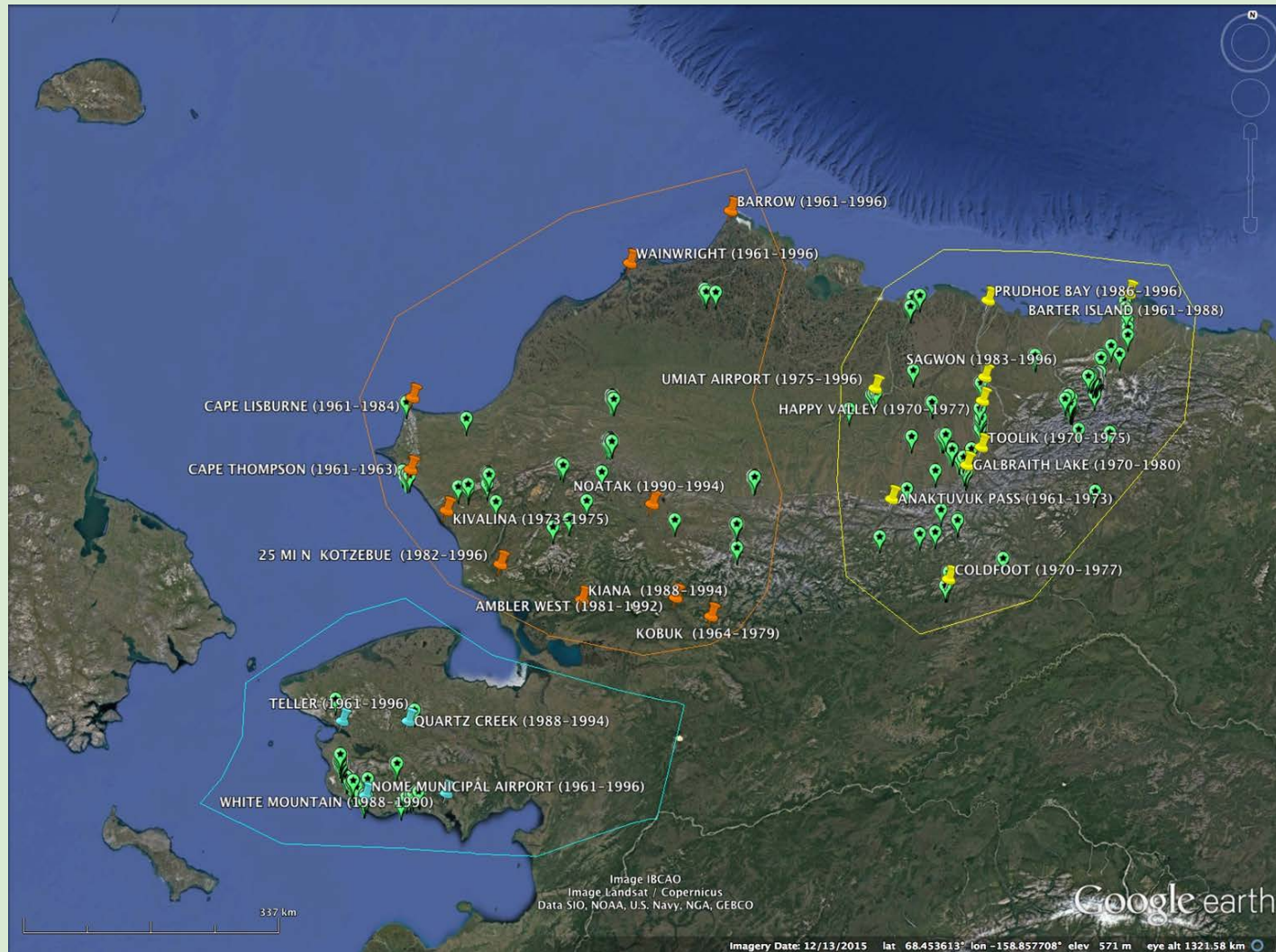
1971 - 1995 across North Slope & Seward Peninsula

3 species: *C. hecla*, *B. chariclea*, *B. freija*

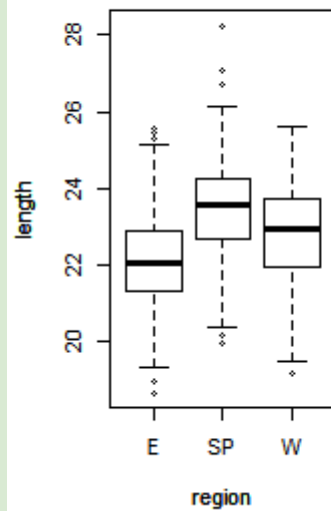
15 undergraduate students measured & curated 2500 specimens

Photos by Kenelm W. Philip

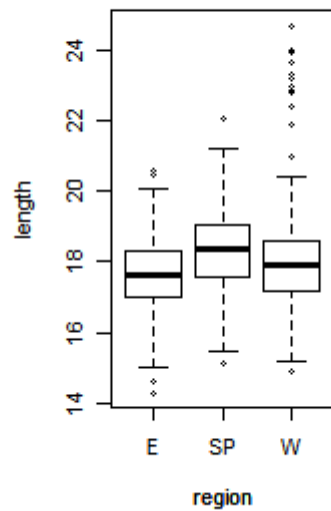




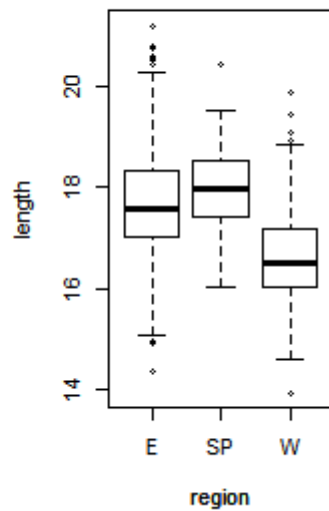
C.hecla all



B.chariclea all



B.freija all



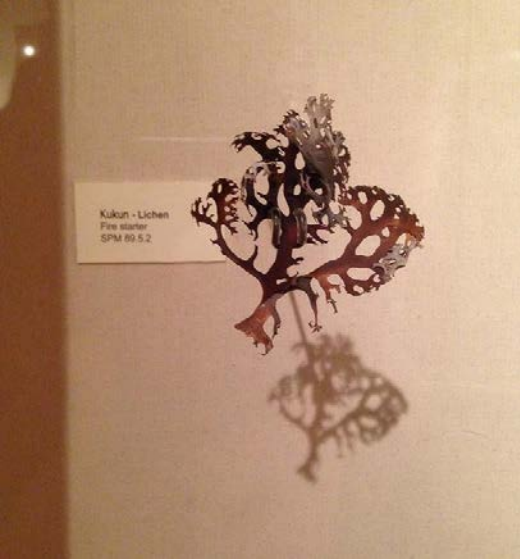
rk 2016

ctic

sica Rykken









Galena Butterfly Festival

MAKE BUTTERFLY
CRAFTS

2016

Learn about Alaska's
butterflies

Catch and identify
butterflies



Saturday July 16

1-4 pm

Galena Ballfield

Stop by any time



Come learn how to catch and identify butterflies with
Kathryn Daly from the University of Alaska Museum of the North.

Call Karin at USFWS (656-1231) for more information.



Nymphalis
milberti
pachner



Aglais milberti-47-5191-mi-37-HH © Ken Philip 2013

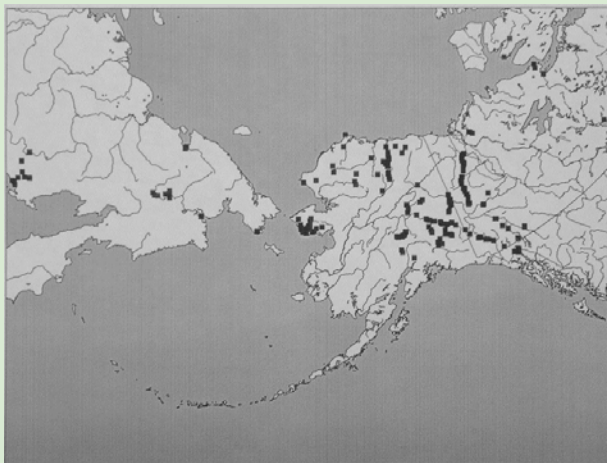


Acknowledgements

Special thanks to the University of Alaska Museum, University of Alaska Fairbanks, Alaska National Park Service, Galena USFWS (Karin Bodony), & all who contributed to the ALS



"Whaddaya mean I can't come in unless I promise to collect for the ALS?"



Alaska Lepidoptera Survey field trip sites: 1970-1998

